



ENTEGRA  

---

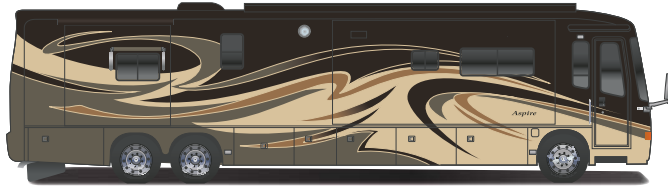
COACH®



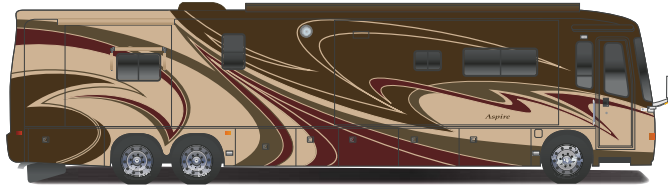
2013 ASPIRE

*Without compromise.*

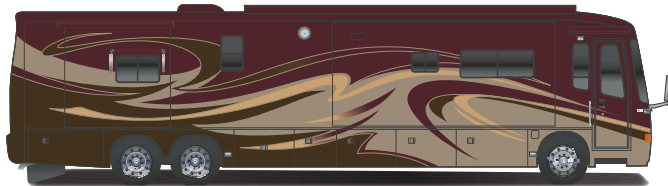
## EXTERIOR COLORS



RADIANT BRONZE

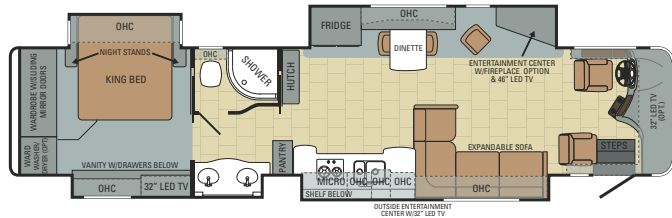


AUTUMN BERRY



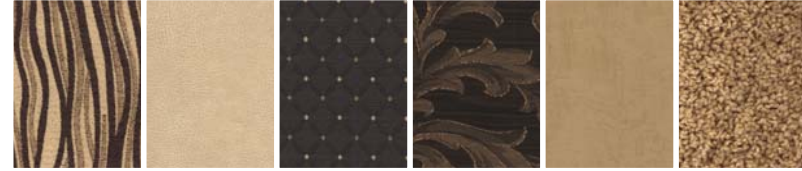
GOLDEN GARNET

### 42DEQ



## INTERIOR COLORS

### IRISH CREAM



MAIN

ULTRA-LEATHER SEATING

COORDINATE

BEDSPREAD

ACCENT

CARPET



WASHINGTON  
GLAZED CHERRY

### ESPRESSO



MAIN

ULTRA-LEATHER SEATING

COORDINATE

BEDSPREAD

ACCENT

CARPET



TUSCAN GLAZED  
MAPLE

### CABERNET



MAIN

ULTRA-LEATHER SEATING

COORDINATE

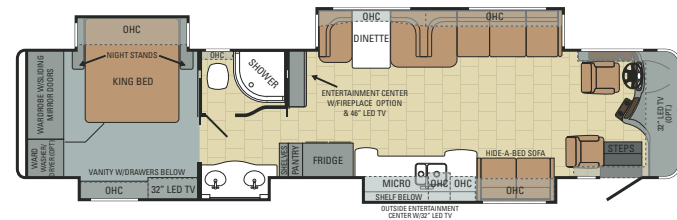
BEDSPREAD

ACCENT

CARPET

## FLOORPLANS

### 42DLQ OPTIONS A, B, C, D, E

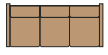


#### OPTION A



EASY BED SOFA  
W/TABLE OPTION

#### OPTION B



HIDE-A-BED WIDESPREAD  
OR TABLE OPTION

#### OPTION C



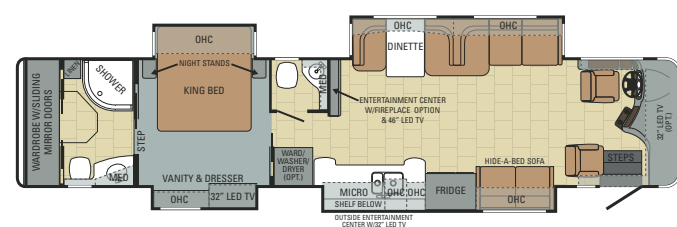
FREE STANDING  
TABLE W/4 CHAIRS

#### OPTION D



EURO CHAIR OPTION

### 42RBQ OPTIONS A, B, C, D, E



#### OPTION E



DESK OPT. W/28\"/>

# STANDARDS & OPTIONS

## BATHROOM

- 2-panel residential-style solid hardwood passage doors
- High gloss 12"x12" porcelain tile with porcelain inserts
- Power MaxxAir vent
- Solid surface countertops with integrated sink
- One-piece radius fiberglass shower with integrated seat
- Oil rubbed bronze fixtures
- Porcelain stool

## BEDROOM

- Samsung 32" LED TV
- Oil rubbed bronze halogen reading lights
- Home theater system, Dolby Digital 5.1 Surround Sound
- King Select Comfort air mattress
- Hardwood wardrobe doors w/mirror
- In-bed remote secure coach locking system

## KITCHEN

- High gloss 12"x12" porcelain tile with porcelain inserts
- Recessed, glass top gas range
- Convection microwave oven with carousel
- Oil rubbed bronze high-rise single-lever faucet with pull-out sprayer
- Solid surface countertops with integrated sink
- Residential refrigerator with ice maker and water dispenser
- Porcelain tile backsplash with glass design inlays
- Silverware drawer, divided for utensils
- Pullout cabinet extension with countertop
- Cutting board
- Large deep drawer with waste basket

## INTERIOR

- 2-panel residential-style solid hardwood passage doors throughout
- Samsung 46" LED HDTV in living area
- All-in-one Dolby Digital 5.1 Surround Sound home theater system
- Central vacuum system with vac pan
- Ultraleather furniture package
- Multiplex lighting

- LED recessed 12V lighting package
- Day/night roller shades throughout
- Prep for washer and dryer
- Slideouts controlled with remote

## DRIVER COMPARTMENT AMENITIES

- 3-point, lap and shoulder safety belts integrated into driver and passenger seats
- Adjustable foot pedal
- Battery boost switch
- Chassis battery disconnect
- Color back-up camera and monitor
- Fog lights
- In-dash compass and exterior temperature gauge
- Powered front sun visors and privacy shade
- Intermittent windshield wipers, single motor (Smart Wheel controlled)
- Powered stepwell cover with pinch resistance technology
- Side cameras with turn signals
- Sirius radio and tuner
- Smart Wheel steering with integrated controls for systems
- Spartan message center with LCD display featuring: odometer, tachometer, instantaneous fuel economy, fuel remaining, outside air temp., coolant temp., engine oil temp. and pressure, transmission temp., turbo boost pressure, air pressure, diagnostic functions, fault codes, service reminders, percentage of engine load, trip meter, speed and voltage
- Touch-screen AM/FM/CD/DVD with GPS navigation, Bluetooth and (4) speakers
- Touch control for hydraulic automatic leveling jack system
- CB prep w/antenna

## CHASSIS

- (2) chassis batteries
  - 4.88 "Quiet Gear" rear axle ratio
  - 100-gal. fuel tank (dual fill)
  - 170-amp alternator
  - 15,000-lb. hitch with 7-pin plug
  - Allison 3000 MH 6-speed shift pad electronic transmission
- Cummins ISL turbocharged 450 HP engine  
1,250 lb. ft. torque at 1,400 RPM

- All-wheel ABS brakes
- Side-mounted radiator
- Daytime running lights
- Engine block heater
- Two-stage Jake brakes
- Polished aluminum wheels
- Raised rail for maximum storage
- Remote air fill for air hose
- Tag axle auto weight release
- Rear axle, 20,000-lb. rated, tag axle 12,000-lb.
- Front axle 1-beam 14,600-lb. wide track

## CONSTRUCTION

- 3/4" (7) ply plywood main floor decking
- 2-1/2" wall with welded tubular construction
- 2" x 4" floor truss construction
- 3M front protective film mask
- Aluma-Tru Superstructure construction on 12"-16" centers
- Enclosed, insulated and heated floor and underbelly
- Flush-mounted slideout rooms
- Fully decked roof with 3/8" plywood
- Polar Pack insulation with reflective Flexfoil floor (R-33), roof (R-24), sidewalls (R-16)
- One-piece fiberglass roof
- Reli-torq slideout system
- Smooth gel-coat fiberglass exterior walls
- Steel reinforced front cap and windshield frame
- X-Bridge frames engineered into chassis

## EXTERIOR

- Carefree armored power entrance door awning
- Carefree armored slideout awnings
- Chrome, heated, remote control, side-view mirrors
- Docking lights
- Aire-Secure travel locks for all passage doors
- Frameless dual-pane tinted safety-glass windows
- Full-width rear mudflap
- Hydraulic automatic leveling jacks (dual positive)
- Hadley air horns
- Keyless entry with key fob
- Rear-molded fiberglass cap with integrated rear intake
- Roof ladder
- Slideout cargo tray
- Sliding battery tray

- Uni-Dock exterior utility center, heated and enclosed with second system monitor panel
- Window awnings
- Exterior 32" LED HDTV with CD/DVD player and speakers

## HEAT, POWER & WATER

- Aqua-Hot 375-LP hydronic water and heating system with in-floor heat throughout
- (3) 15,000-BTU low profile central A/Cs with heat pump, digital thermostat, Chillgrille and drain tubes
- 5-watt solar panel (for chassis batteries)
- 50-amp quick-connect power cord with electric reel
- 2,800-watt Pure sine wave inverter with (4) 6V batteries
- Black holding tank sprayer
- Onan 10,000-watt diesel generator on sliding tray
- Onan auto generator and temperature start system
- Sea level tank monitoring system
- Total coach dual system water filter
- 50-gal. propane gas tank, chassis-mounted

## SAFETY EQUIPMENT

- Deadbolt lock on entrance door
- Egress window
- Fire extinguisher
- Lap safety belts in living area
- Propane alarm
- Security system
- Smoke alarm

## OPTIONS

- Samsung 32" LED HDTV, front overhead
- Desk in lieu of lounge (N/A with dinette sofa ensemble)
- Fireplace
- Free-standing table with 4 chairs and sofa (42DLQ, 42RBQ)
- Leather chairs (2) (N/A with desk option or dinette sofa ensemble)
- 12 cu. ft. 4-door refrigerator with ice maker
- Stackable washer and dryer
- Winegard in-motion dome satellite dish
- Porcelain tile in bedroom

# SPECIFICATIONS

Floor Plan	GVWR (lbs.)	GCWR (lbs.)	Front GAWR (lbs.)	Rear GAWR (lbs.)	Tag Axle GAWR (lbs.)	Wheel Base	Overall Length	Overall Height w/ Air & Satellite	Exterior Width	Interior Headroom	Fresh Water Capacity (gal.)	Grey Waste Water Capacity (gal.)	Black Waste Water Capacity (gal.)
42DEQ	46,600	61,600	14,600	20,000	12,000	296"	43' 1"	12' 11"	101"	84"	80	50	50
42DLQ	46,600	61,600	14,600	20,000	12,000	296"	43' 1"	12' 11"	101"	84"	80	50	50
42RBQ	46,600	61,600	14,600	20,000	12,000	296"	43' 1"	12' 11"	101"	84"	80	50	50





After 40 years of building Jayco, the world's largest privately-owned RV manufacturer, our family is proud to stand behind every Entegra Coach we build with the Bontrager Family Promise. It's a promise to provide unfailing customer service — before, during and after the sale. To learn more, visit us online or see your local Entegra Coach dealership.

DERALD & WILBUR BONTRAGER  
FOUNDERS OF ENTEGRA COACH



## A PEACE-OF-MIND PROMISE

### 2-YEAR WARRANTY / 5-YEAR STRUCTURAL

Our family is proud to stand behind every Entegra Coach we build. That's why we back our motor coaches with a manufacturer's limited warranty, warranted to the original purchaser for two years (five years structural) from the original date of purchase or 24,000 miles of use, whichever comes first, against defects in materials and workmanship. Our commitment is to provide you with the highest level of products and services possible. We invite you to compare us with other manufacturers — we think you will find that our passion for your satisfaction is unmatched. For a copy of the limited warranty with full terms and conditions, ask your local Entegra Coach dealer.

### 3-YEAR PLATINUM-LEVEL ROADSIDE ASSISTANCE

We promise peace of mind in countless ways with the Entegra Coach Customer First Roadside Assistance program, yours at no cost during your first three years of ownership. Offered through National Motor Club, the largest RV emergency road service in the country, this program gives you immediate access to dependable roadside assistance and support service with a simple phone call.

- 24/7 technical support and assistance technicians
- Service appointment assistance
- Mobile mechanic
- Emergency road towing and winching
- Delivery of emergency fluids
- Flat tire service
- Jump start/battery boost
- Lockout services
- Complete concierge service (including many types of errands and personal services)



ENTEGRA  
COACH®

*Without compromise.*

Entegra Coach | P.O. Box 460 | Middlebury, IN 46540 [www.entegracoach.com](http://www.entegracoach.com)

Please Note: Information on this publication is the latest available at the time of printing. Entegra Coach reserves the right to make changes and to discontinue models without notice or obligation. RVs built for sale in Canada may differ to conform to Canadian codes. ©2012 Entegra Coach

2013 Aspire.cdr JM 6-12 Printed in the U.S.A.



#### Gross Vehicle Weight Rating (GVWR):

The maximum permissible weight of the motor coach, including the Unloaded Vehicle Weight (UVW) plus passengers, personal items, all cargo, fluids, options and dealer-installed accessories. The GVWR is equal to or greater than the sum of the UVW and the Cargo Carrying Capacity.

#### Gross Axle Weight Rating (GAWR):

The maximum allowable weight each axle assembly is designed to carry, as measured at the tires, therefore including the weight of the axle assembly itself.

#### Gross Combined Weight Rating (GCWR):

The maximum allowable combined weight of the motor coach used as a tow vehicle and the attached towed vehicle.

It is important for your safety and enjoyment that you are aware of the weights and tow ratings of the RV you select. Consult a competent advisor for questions or advice. Whether you are new to RVing or a veteran, get a feel for the performance of your RV before heading out on the roadways. When you tow a vehicle with your RV, you must drive differently than when you drive a single vehicle. Practice hooking up, driving, backing up and braking in a safe environment or seek out professional instruction. Entegra Coach affixes a weight label to each RV which lists weight information for that vehicle. Refer to that label to verify the vehicle will meet your requirements. See specification chart within this publication.