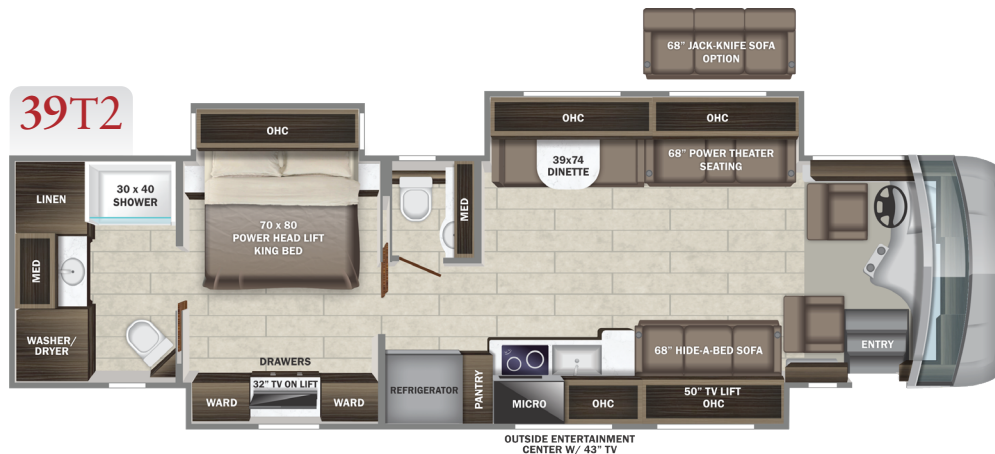
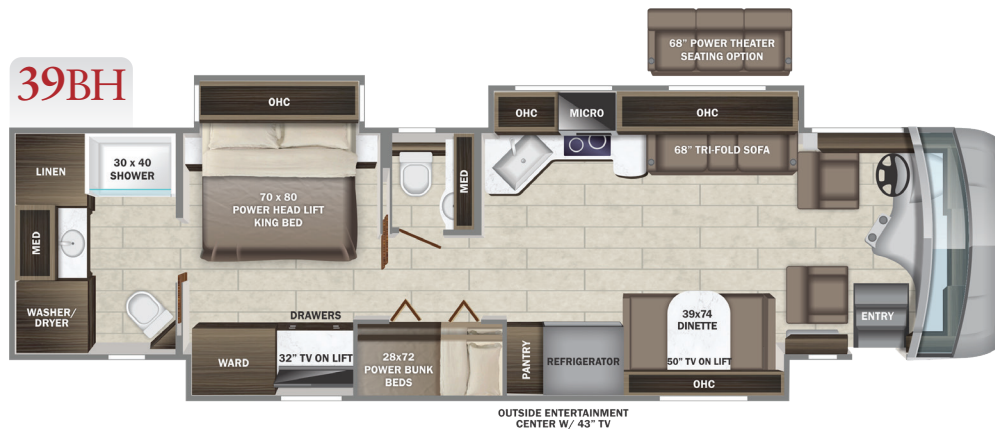




ENTEGRACOACH®

# 2023 Reatta



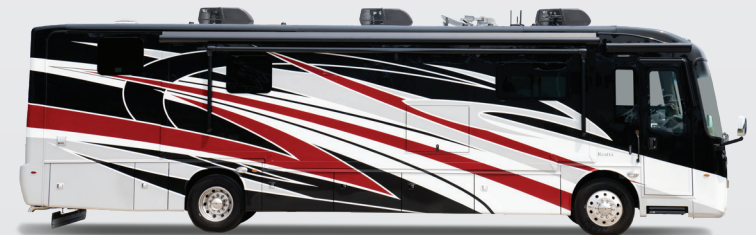
## PAINT SELECTIONS



Blue Velvet



Penny Graphite



Pewter Red



Red Carmel

## CHASSIS

Spartan® K1 raised-rail chassis  
Cummins® B6.7 turbocharged 360 HP engine  
with 800 lb.-ft. torque at 1,800 RPM  
Allison® 3,000 MH 6-speed transmission  
Rear-mounted radiator  
170 amp alternator  
750W engine block heater  
Variable geometry turbo (VGT) engine brake  
Independent front air suspension (IFS) front axle  
- 12,600 lb. (37K) 14,320 lb. (39BH/39T2)  
Rear axle - 20,000 lb. (37K) 22,000 lb.  
(39BH/39T2)  
4.88 rear axle ratio  
Michelin® 275/80R 22.5 in. tires  
Bilstein® 46mm shocks  
Wireless tire pressure monitoring system (TPMS)  
with temperature monitoring  
Equalizer™ hydraulic automatic coach leveling  
Remote air connection  
(2) 12V chassis batteries  
100 gal. fuel tank  
10 gal. DEF tank  
Spartan® Safehaul tow vehicle air brake system  
10,000 lb. hitch with 7-pin plug

## CONSTRUCTION

Roof: One-piece fiberglass with 3/8 in. plywood  
decking, 4 in. arched aluminum trusses,  
insulation and reflective Flexfoil® (R-24)  
Sidewalls: Vacuum-bonded, high-gloss gelcoat  
with R-8 bead-foam insulation  
Floors: Vacuum-bonded layers of Darco  
underbelly, a welded aluminum frame, R-9  
bead-foam insulation, 3/8 in. Structurwood®  
and 1/4 in. plywood  
X-Bridge™ bracing welded into chassis frame  
Heated basement storage  
Insulated front and rear caps (R-24)  
Electric-powered slideout rooms

## HEAT, A/C, WATER, AND POWER

Onan® 8,000W diesel generator, with automatic  
start, on slide-out tray  
2,000W pure sine wave inverter with 100 amp  
battery charger  
(2) L16 AGM batteries (6V/390 amp hrs. ea.)  
50 amp power cord  
Automatic transfer switch with surge protection  
(2) 190W Go Power!® solar panels

(3) 15,000 BTU A/C units with heat pumps [(2)  
15,000 BTU units with heat pumps on 37K]  
35,000 BTU furnace (37K) / (1) 20,000 and (1)  
30,000 (39BH, 39T2)  
Tankless gas water heater  
24.5 gal. propane tank  
LED-lit fireplace with 5,000 BTU heating  
element (37K only)  
Sani-Con® macerator holding tank dump system  
with manual gate valves and manual backup  
Black holding tank sprayer  
City and tank water filtration system

## EXTERIOR

Carefree® power patio awning with LED lights  
Carefree® power entrance door awning with  
LED lights  
Carefree® slideout awnings  
Carefree® window awnings  
Frameless, dual-pane, tinted, safety-glass windows  
Grab handle and keypad system for keyless entry  
43 in. Samsung® 4K UHD Smart TV with tilt,  
swivel, and extend adjustment  
JBL® radio and speakers with USB port  
and receptacle  
Heated, remote-control, side-view mirrors with  
integrated cameras  
Diamond Shield™ front protective film mask  
Halogen high and low beam headlights and  
fog lights  
Daytime running lights  
LED marker lights, turn lights, license plate  
light, third brake light, accent lights and  
docking lights  
Porch light  
Mudflap with chrome "Entegra" nameplate  
Winegard® TRAV'LER satellite dish DIRECTV®  
- standard with USA option  
Winegard® TRAV'LER satellite dish Shaw TV  
- standard with CSA option  
Winegard Connect 2.0 Wi-Fi/4G antenna  
Exterior utility center  
Slideout basement storage tray  
Sikkens custom full-body paint

## COCKPIT

Valid™ 12.3 in. digital dash with quad core  
graphics processor, on-board diagnostics,  
selector knob and ability to display traditional  
instrument cluster, 360° camera system or  
GPS navigation

Xite™ 360° HD digital camera system  
Xite™ XSG4 infotainment system with 9 in.  
touchscreen, iGO navigation, Bluetooth®,  
Sirius XM™ and AM/FM tuner, integrated  
camera control and house mode whole-coach  
audio distribution  
Steering wheel with integrated controls for  
cruise, wipers, radio and Bluetooth®  
phone functionality  
Manual tilt and telescoping steering column  
Ultra-Vision® one-piece wrap-around  
tinted windshield  
6-way power adjustable driver and passenger  
seats with power recline  
Powered flush stepwell cover  
Powered adjustable brake and accelerator pedals  
Powered front sun visors and privacy shades

## INTERIOR

Firefly multiplex system with 10 in. VegaTouch  
Firefly multiplex system with 7 in. VegaTouch  
touchscreen for complete integration of coach  
controls (mobile app available)  
50 in. Samsung® 4K UHD Smart TV  
Samsung® sound bar with subwoofer  
Sony® Blu-ray™ player  
Premium furniture  
Hand-laid, woodgrain porcelain tiled floors  
LED interior lighting  
Decorative ceiling feature with integrated  
accent lighting  
Manual solar day shades and blackout  
night shades  
Central vacuum system  
Removable screen on entry door

## KITCHEN

Window with push-out lever operation and screen  
Stainless steel residential refrigerator with ice  
maker and water dispenser  
Induction cooktop  
1.5 cu. ft. convection microwave oven  
Solid-surface countertops with stainless steel sink  
Fan-Tastic power exhaust fan with intake

## BEDROOM

King-size pillow-top mattress on tilt bed  
32 in. Samsung® LED 1080P Smart TV  
Sony® Blu-ray™ player

## BATHROOM

Solid-surface countertops with integrated sink  
One-piece fiberglass shower with skylight  
Aqua View SHOWERMISER™ water  
saving system  
Thetford® Aqua Magic toilet with foot flush  
Fan-Tastic power exhaust fan with intake  
Separate washer and dryer

## SAFETY

Combination carbon monoxide detector and LP  
gas alarm  
Smoke alarm

## OPTIONS

Canadian standards (CSA)  
Theater seating with power recliners (39BH)  
Winegard® in-motion satellite dome  
Winegard® TRAV'LER satellite dish Dish  
Network®  
Drop-down overhead bunk in cab area with  
750 lb. capacity

## WARRANTY



## NO ONE OFFERS A BETTER WARRANTY

At Entegra Coach, we build our RVs to handle every  
adventure, then back them with our industry-leading 2+3  
limited warranty. Our 2-year limited warranty has you  
covered for 2 camping seasons. That's 730 days. In addition,  
our 3-year structural limited warranty has you covered for  
3 camping seasons or 1,095 days. You won't find a better  
limited warranty in the business, because the only strings  
we attach are those that deliver the ultimate in reliability.  
For a copy of our 2-year limited + 3-year structural limited  
warranty with complete terms and conditions, please contact  
your local Entegra Coach dealer.

Floorplan	GVWR (lbs.)	GCWR (lbs.)	Front GAWR (lbs.)	Rear GAWR (lbs.)	Tag GAWR (lbs.)	Wheel Base	Overall Length	Exterior Height w/ A/C & Satellite	Exterior Width	Interior Height	Fresh Water Capacity (gal.)	Grey Waste Water Capacity (gal.)	Black Waste Water Capacity (gal.)
37K	34,320	44,320	14,320	20,000	N/A	236"	37' 10"	12' 10"	101"	84"	100	62	41
39BH	36,320	46,320	14,320	22,000	N/A	261"	39' 11"	12' 10"	101"	84"	100	62	41
39T2	36,320	46,320	14,320	22,000	N/A	261"	39' 11"	12' 10"	101"	84"	100	62	41

It is important for your safety and enjoyment that you are aware of the weights and tow ratings  
of the RV you select. Consult a competent advisor for questions or advice. Whether you are  
new to RVing or a veteran, get a feel for the performance of your RV before heading out on the  
roadways. When you tow a vehicle with your RV, you must drive differently than when you drive  
a single vehicle. Practice hooking up, driving, backing up and braking in a safe environment or  
seek out professional instruction. Jayco affixes a weight label to each RV which lists weight  
information for that vehicle. Refer to that label to verify the vehicle will meet your requirements.  
Gross Vehicle Weight Rating (GVWR): The maximum permissible weight of the motorhome,  
including the Unloaded Vehicle Weight (UVW) plus passengers, personal items, all cargo, fluids,  
options and dealer-installed accessories. The GVWR is equal to or greater than the sum of the  
UVW and the Cargo Carrying Capacity. Gross Combined Weight Rating (GCWR): The  
maximum allowable combined weight of the motorhome used as a tow vehicle and the attached  
towed vehicle.