



2019 CORNERSTONE | ANTHEM | ASPIRE | INSIGNIA

2019 LUXURY DIESEL



ENTEGRA  
COACH®

*enjoy the journey*







# ENTEGRA

COACH®

#WEAREENTEGRA



CORNERSTONE PG 3-6

ANTHEM PG 7-10

ASPIRE PG 11-14

INSIGNIA PG 15-18



# THE QUIETEST RIDING, BEST HANDLING COACH ON THE MARKET TODAY. PERIOD.

## HERE'S WHY:

### 1. SPARTAN® CHASSIS

With more than 30 years of custom chassis manufacturing, Spartan gives us the industry's premier foundation.

### 2. EXCLUSIVE X-BRIDGE™ FRAME

Our exclusive X-Bridge frame adds even more floor strength and structural rigidity, eliminating chassis flex and twisting; with it, the suspension—not the chassis—absorbs road shock and vibration.

### 3. FIVE-INCH-THICK FLOORS

The industry's thickest floors starts with several layers of plywood for dramatic reductions in energy transmission, noise and vibration. Cabinets are screwed directly to the wood and tile is laid precisely around them; other manufacturers place cabinets on top of the tile, causing squeaks or cracking.

### 4. RESIDENTIAL-STYLE WALLS AND ROOF

Our roof combines crowned aluminum truss rafters on 16-inch centers with Flexfoil®, fiberglass insulation and 3/8-inch plywood decking. Our walls, along with our front and rear caps, feature tucked-and-glued batting insulation—the same kind of fiberglass insulation found in sound-absorbing theater rooms.

### 5. MONOTUBE GAS PRESSURE SHOCKS

Designed specifically for luxury motorcoaches by Bilstein®, these shocks have 228% more surface area than twin-tube shocks for greater sensitivity and control. They virtually eliminate excessive sway and self-adjust so you don't have to change settings.



### 6. MICHELIN® MOTORHOME TIRES

One of the most trusted names in the business, Michelin's motorhome tires are designed for unparalleled fuel efficiency, high mileage and precise load control.

### 7. DUAL DIESEL EXHAUST FLUID (DEF) FILL PORTS

DEF fill ports on both sides of the coach for convenience (on most floorplans).



# ANTHEM





## STANDARDS & OPTIONS

### CHASSIS

Spartan® K2 raised rail chassis  
Cummins® L turbocharged 450 HP engine 1,250-lb. ft. torque at 1,400 RPM  
Allison® 3000 MH 6-speed transmission  
1,000 watt engine block heater  
Reyco® Granning® IFS independent 17,000-lb. front axle with air suspension  
Rear axle 20,000-lb., tag axle 12,000-lb.  
4.88 rear axle ratio  
15,000-lb. hitch with 7/4-pin plug  
Tag axle air dump  
Side-mounted radiator  
ABS disc brakes on front axle, drum brakes on drive and tag axle  
Two-stage engine brake  
Automatic traction control  
Bilstein® shocks- 60MM front & 46MM rear/tag  
150-gal. fuel tank (dual fill)  
15-gal DEF tank (dual fill)  
Michelin® 315/80R 22.5" tires (front) and 295/80R 22.5" tires (rear)  
55-degree turning radius  
Chassis batteries 2-12 volt  
170-amp alternator  
Remote air connection  
Hadley® air leveling system with auxiliary air compressor  
Equalizer hydraulic automatic leveling  
Blind spot monitoring system  
Safehaul tow air brake system  
Tire pressure monitor system

### CONSTRUCTION

X-Bridge™ frames welded into chassis frame  
Insulated, enclosed, thermostat controlled storage area  
Insulation with reflective Flexfoil® floor (R-33), roof (R-24), sidewalls (R-16), front and rear caps (R-22)  
2" x 4" floor truss construction  
3/4" 7-ply plywood main floor decking  
Aluma-Tru™ superstructure construction on 12"-16" centers  
2-1/2" exterior wall with welded tubular aluminum construction and high-gloss, gel-coat fiberglass  
Flush-mounted electric-powered slideout rooms with VegaTouch control  
One-piece fiberglass roof with 3/8" plywood decking and 4" arched aluminum roof truss  
Steel-reinforced front cap and windshield frame

### HEAT, A/C, WATER, AND POWER

Aqua-Hot® 450 diesel hydronic water and heating system with in-floor heat throughout and engine preheat  
15,000-BTU low profile A/Cs (3) with heat pumps and condensation drain system  
50-amp power cord with electric reel  
Onan® 12,500-watt diesel generator with auto gen start on powered slide-out tray  
3,000 watt pure sine wave inverters (2)  
L16 AGM batteries (4), (6v/390 amp hrs. ea.)  
Premium surge protector transfer switch  
Water hose with electric reel  
Black holding tank sprayer  
Macerator holding tank dump system with manual gate valves  
SeeLevel™ tank monitoring system  
City and tank water filtration system  
Winterizing drain system  
Battery boost system

### EXTERIOR

Premier Bus Armor 8" stainless steel trim  
Lighted, chrome clearance accent  
3M® front protective film mask  
LED high and low beam headlights  
LED fog lights  
Daytime running lights  
LED marker lights, turn lights and license plate light  
LED docking lights  
LED accent lights on underside of slideout rooms passenger side  
LED Third brake light  
Lighted grab handle with keypad system  
Girard® power entrance door awning with LED lights  
Girard Ultra window shade awning and Ultra slide-out awnings  
Roof mounted Girard Vision dual pitched patio awnings with LED lights  
Chrome, heated, remote control, Ramco side-view mirrors with blind-spot indicators  
Frameless, tinted, dual-pane, Hehr safety-glass windows  
40" Samsung® LED HDTV and Bose® Solo 5 sound bar on TV bracket with extend, tilt and swivel arm  
Exterior utility center, heated and enclosed with system monitor panel  
Manual slideout cargo tray  
Winegard® in-motion, dome, roof-mounted satellite dish with prep for TRAV'LER® satellite dish  
Winegard Rayzar automatic powered TV antenna  
Power engine door with manual override  
Full-width rear mudflap, with chrome "Anthem" nameplate

### COCKPIT

Valid 15" digital dash with selector knob  
Message center and monitoring systems included in Valid digital dash  
6-way power, lumbar, Ultraleather driver and passenger seats with integrated 3-point belt  
Push button start  
Powered flush stepwell cover  
Powered front sun visors and privacy shade  
Ultra-Vision® one-piece wrap-around tinted windshield  
Wood-grain, leather-wrapped, tilt and telescoping steering wheel with integrated controls for radio, cruise, and wipers  
Molded side consoles  
Glass panel, dual 9" touchscreen in-dash infotainment center with Rand McNally™ RV navigation, Bluetooth®, Sirius XM™, AM/FM tuner, integrated camera control, house mode whole coach audio distribution, and integrated VegaTouch coach control  
JBL® premium audio sound system with amplifier, speakers and subwoofer  
Power adjustable foot pedals  
High definition digital side and rear view cameras  
Two dual USB ports

### INTERIOR

VegaTouch pad system, for complete integration of coach controls  
Dimmable LED recessed 12V lighting  
High gloss 8" x 48" porcelain tile floor  
Carpet on living area slides  
Power solar day and black out night shades  
Samsung 50" LED HDTV  
Samsung 32" LED HDTV in front overhead  
Bose SoundTouch 300 sound system  
Blu-ray player in living area  
Ultraleather hide-a-bed(s)  
Stacked washer and dryer  
Central vacuum system  
In-step storage with pull-out tray  
LED fireplace (44B, 42DEQ)  
Aire-Secure™ travel locks for all pocket doors

### KITCHEN

Solid surface countertops with stainless steel sink and dimmable LED accent lighting  
Pullout countertop extension with drawers  
Porcelain tile backsplash with glass design inlays  
Large deep drawer for waste basket with easy access trash chute (trash chute not available in 44F)  
Dishwasher with wood raised panel door front  
Induction cooktop with cover  
Whirlpool® Gold 1.9 cu. ft. convection microwave oven  
Whirlpool residential refrigerator with ice maker and water dispenser  
Maxxair® power vent

### BEDROOM

Select Comfort® Sleep Number® king size mattress  
Nightstands with USB ports and solid surface tops  
Ceiling fan  
Large cedar-lined wardrobe with automatic lights (Automatic lights not available in 44F)  
Samsung 32" LED HDTV in bedroom  
Bose Solo 5 sound bar in bedroom  
Blu-ray player

### BATHROOM

Solid surface countertops with integrated sink and dimmable LED accent lighting  
Thetford® Tecma china toilet(s) with push button flush  
Thetford china toilets with push button flush  
Porcelain tiled shower wall with skylight  
Teak wood shower seat (Not available in 44F)  
Maxxair Deluxe power vent

### SAFETY

Security system with glass shatter sensors  
Porch light and motion sensor security lights  
Smoke alarm  
Carbon monoxide alarm  
Safe  
Blind spot monitoring system

### OPTIONS

Canadian Standards  
Ultraleather dinette booth (N/A 44F)  
Theater seating with power recliners and fixed center console  
Winegard TRAV'LER satellite dish - DIRECTV  
Winegard TRAV'LER satellite dish - Shaw® Direct  
Winegard WIFI Extender with 4G/LTE  
Solar panels (Dual-100 watt)  
Exterior freezer - Dometic



## ANTHEM FLOORPLANS



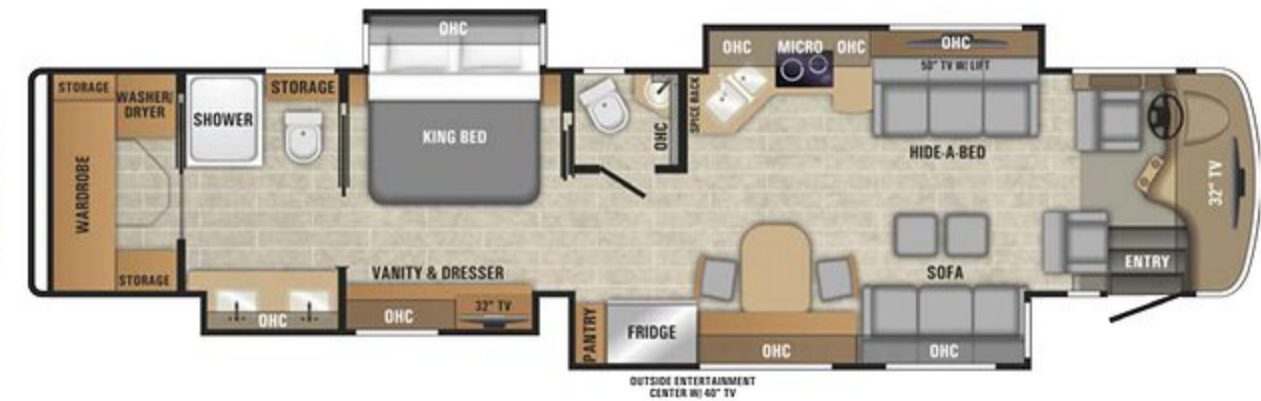
42DEQ | OPTIONS: A AND C



44A | OPTIONS: A AND B



44B | OPTIONS: A AND C



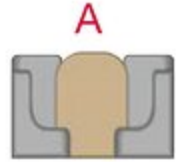
44F | OPTIONS: B



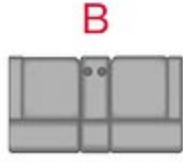
44W | OPTIONS: A AND B



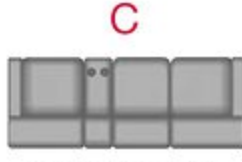
## SPECS & OPTIONS



BOOTH DINETTE  
OPTION



THEATER SEAT OPTION  
FEATURING TWO POWER  
RECLINERS (82-INCH)



THEATER SEAT OPTION  
FEATURING THREE POWER  
RECLINERS (100-INCH)

Floorplan	GVWR (lbs.)	GCWR (lbs.)	Front GAWR (lbs.)	Rear GAWR (lbs.)	Tag GAWR (lbs.)	Wheel Base	Overall Length	Exterior Height w/ A/C & Satellite	Exterior Width	Interior Height	Fresh Water Capacity (gal.)	Grey Waste Water Capacity (gal.)	Black Waste Water Capacity (gal.)
42DEQ	49,000	64,000	17,000	20,000	12,000	296"	43' 5"	12' 11"	101"	84"	100	62	41
44A, 44B, 44F, 44W	49,000	64,000	17,000	20,000	12,000	320"	44' 11"	12' 11"	101"	84"	100	62	41

## ANTHEM INTERIORS



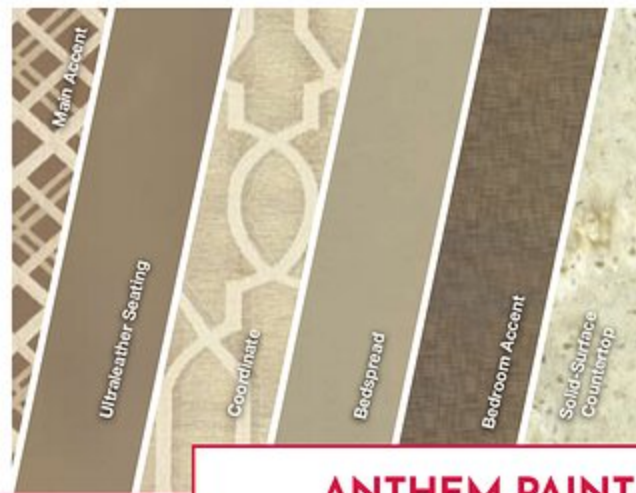
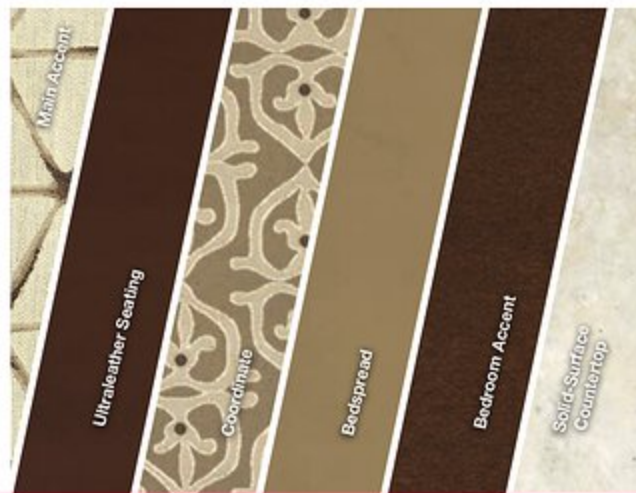
RUSSET



PLATINUM



CHAMPAGNE



Natural Glazed Cherry  
(n/a with Platinum décor)



WOOD OPTIONS



Tranquility  
(Bathroom wood only)

Stonewall Grey  
(Platinum décor only)

## ANTHEM PAINT SELECTIONS



JAZZ



SALSA



WALTZ



JIVE



TANGO





**ENTEGRACOACH, INC., P.O. BOX 460, MIDDLEBURY, IN 46540**

**WWW.ENTEGRACOACH.COM**

Gross Vehicle Weight Rating (GVWR): The maximum permissible weight of the motorcoach, including the Unloaded Vehicle Weight (UVW) plus passengers, personal items, all cargo, fluids, options and dealer-installed accessories. The GVWR is equal to or greater than the sum of the UVW and the Cargo Carrying Capacity. Gross Axle Weight Rating (GAWR): The maximum allowable weight each axle assembly is designed to carry, as measured at the tires, therefore including the weight of the axle assembly itself. Gross Combined Weight Rating (GCWR): The maximum allowable combined weight of the motorcoach used as a tow vehicle and the attached towed vehicle.

Entegra Coach, Inc. | P.O. Box 460 | Middlebury, IN 46540 See dealer for further information and prices. All information in this brochure and on [www.egracoach.com](http://www.egracoach.com) is the latest available at the time of publication approval. Entegra Coach reserves the right to make changes and to discontinue models without notice or obligation. Photography may show optional equipment or props used for decoration purposes only. RVs built for sale in Canada may differ to conform to Canadian codes. ENTEGRACOACH, JAYCO and the JAYCO BIRD IN FLIGHT are registered trademarks of Jayco, Inc. Printed in U.S.A. 27K 07/18 © 2018 Entegra Coach, Inc. 274887